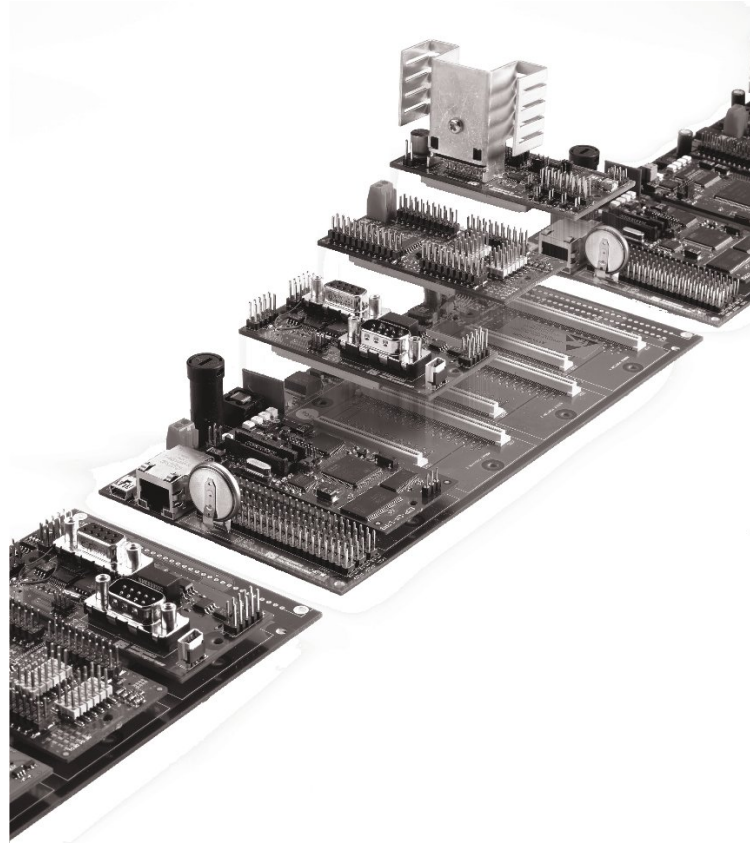
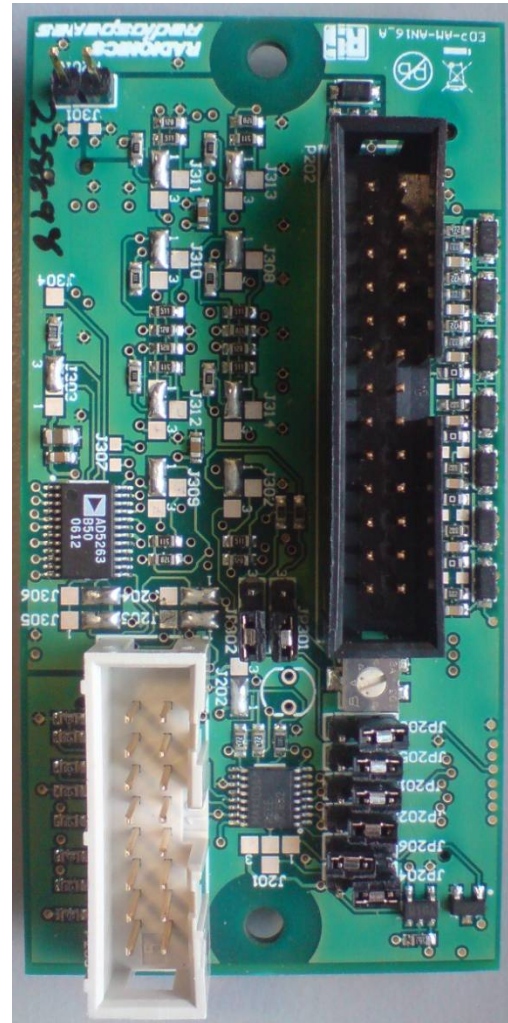
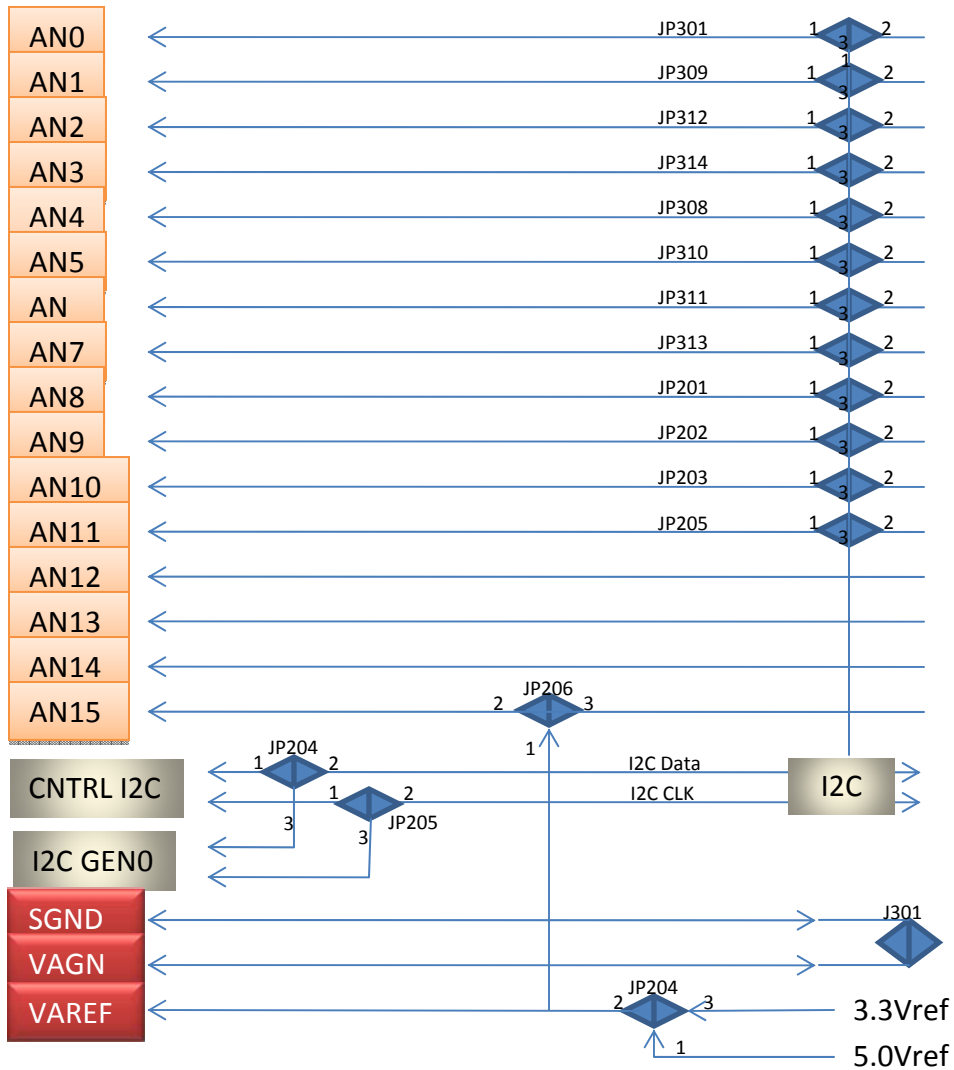


# Mapping Aid For RS-EDP Platform

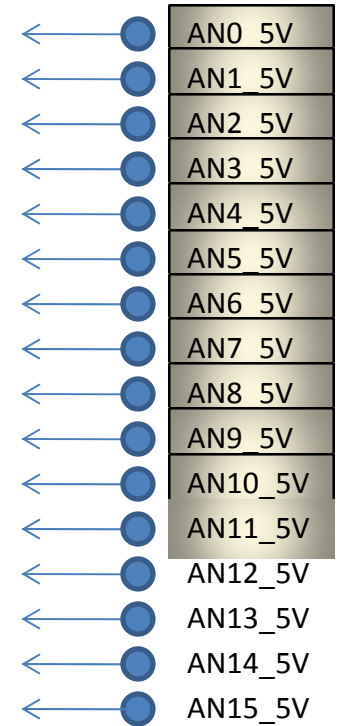


LPC2368 Mapping Aid Complete Rev. 01

# AN16 - Analogue Module to RS-EDP Backplane

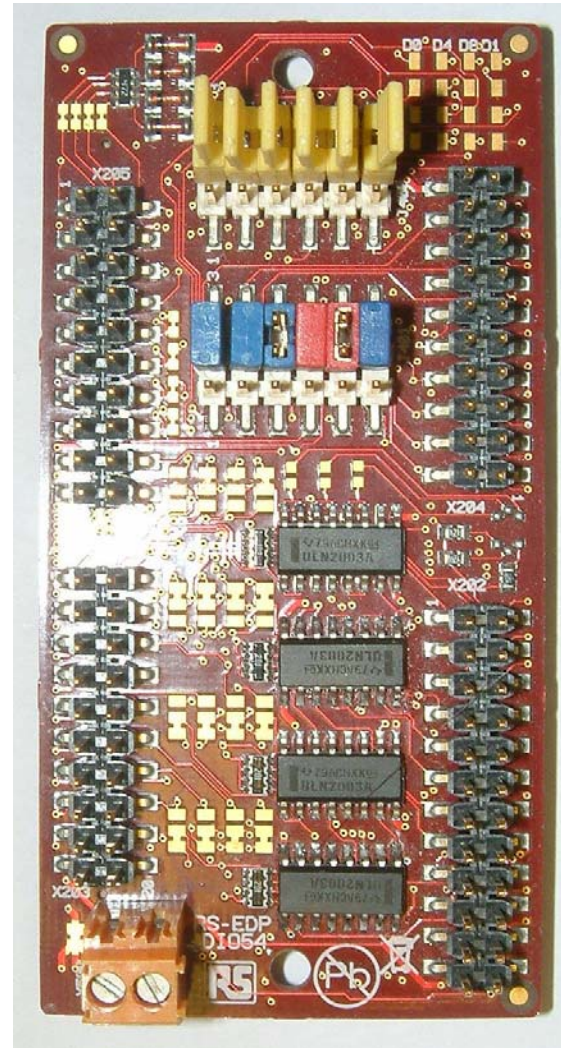
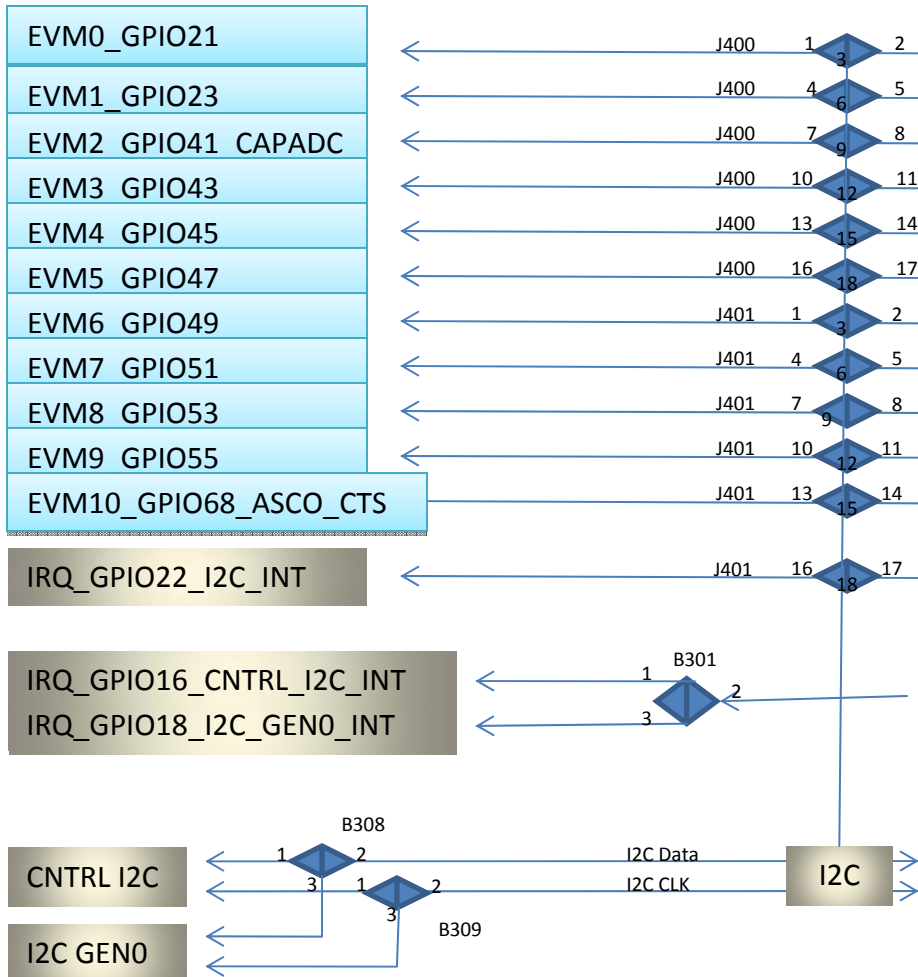


P202 Analogue Input Connector

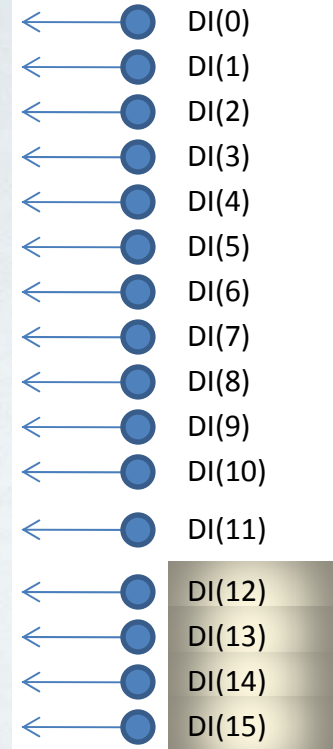


I2C bus can only read inputs AN0\_5V to AN11\_5V

# DIO54 - Digital I/O Module Inputs to RS-EDP Backplane

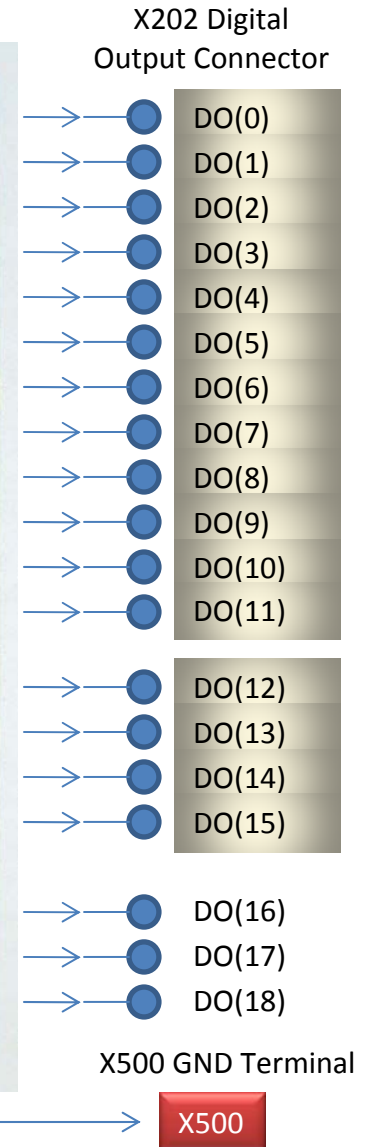
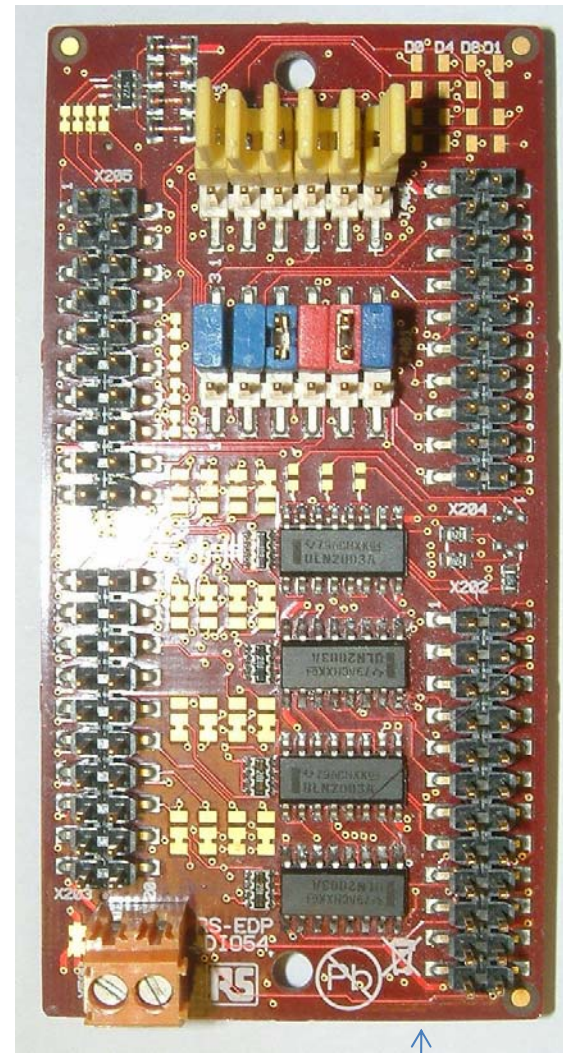
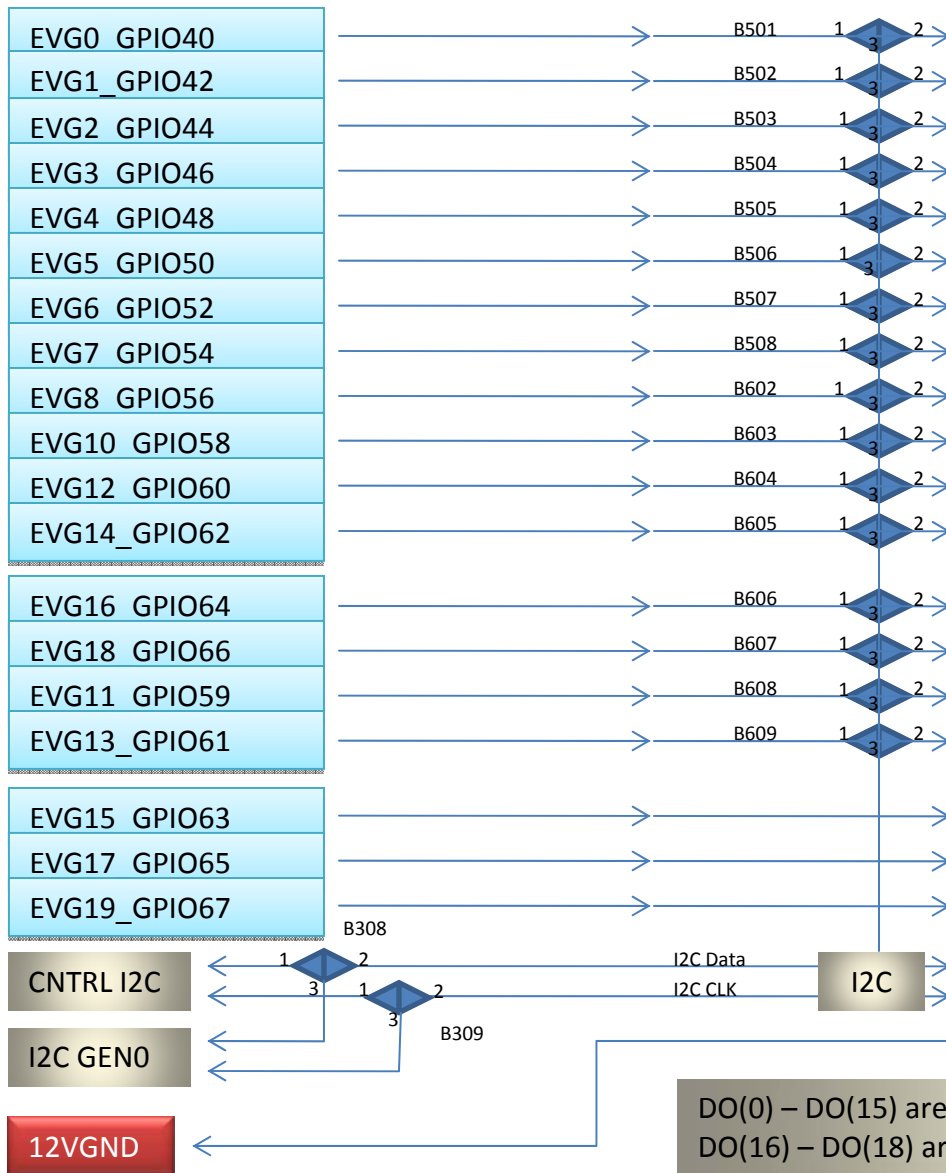


X205 Digital Input Connector



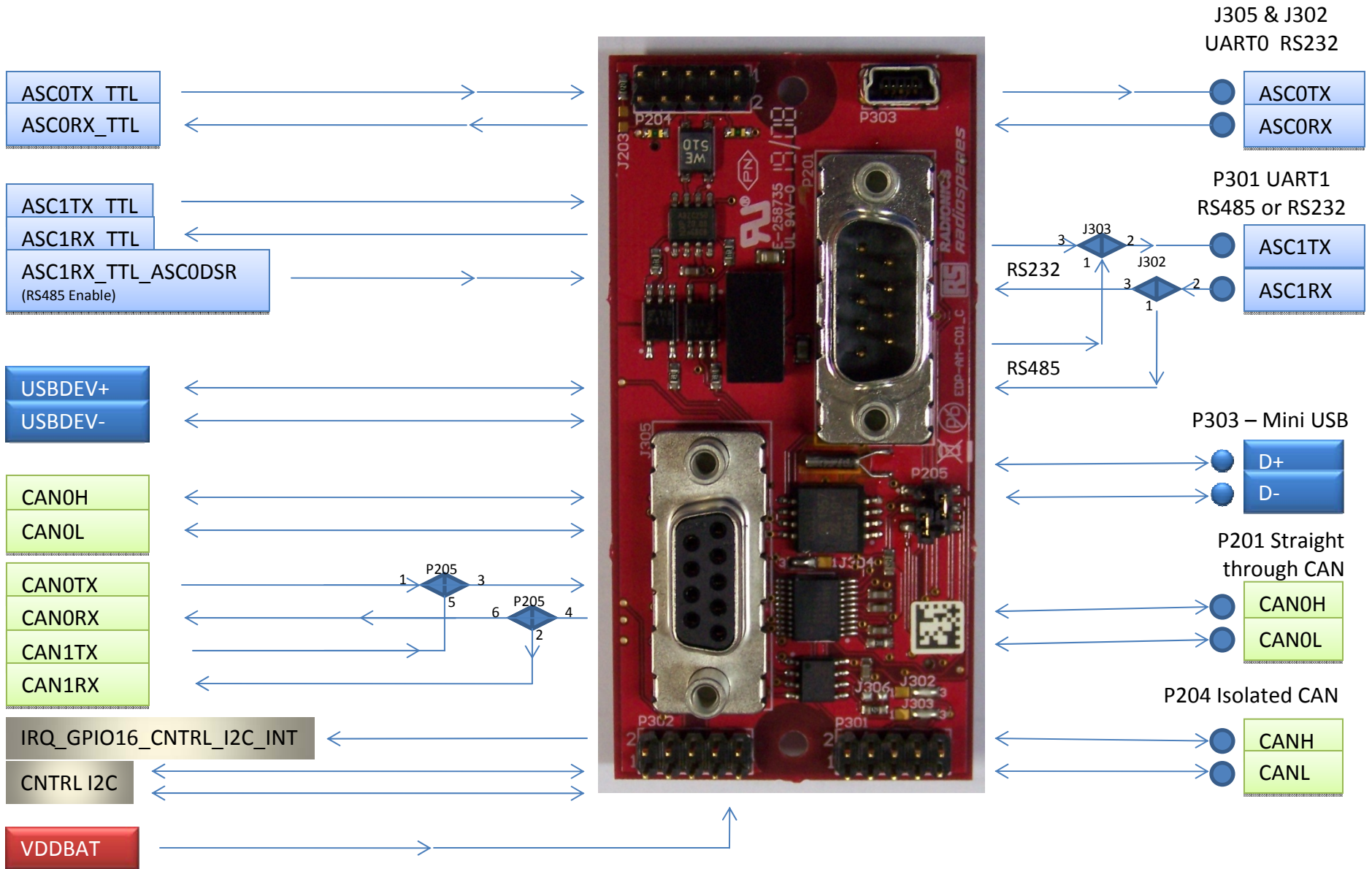
DI(0) – DI(11) can be read via I2C or via backplane by the MCU  
 DI(12) – DI(15) can only be read via I2C.

# DIO54 - Digital I/O Module Outputs to RS-EDP Backplane

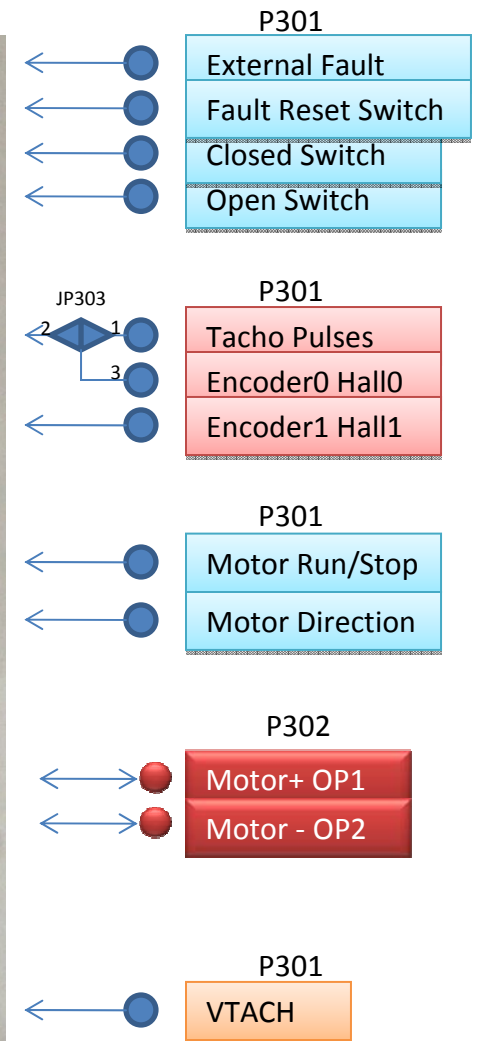
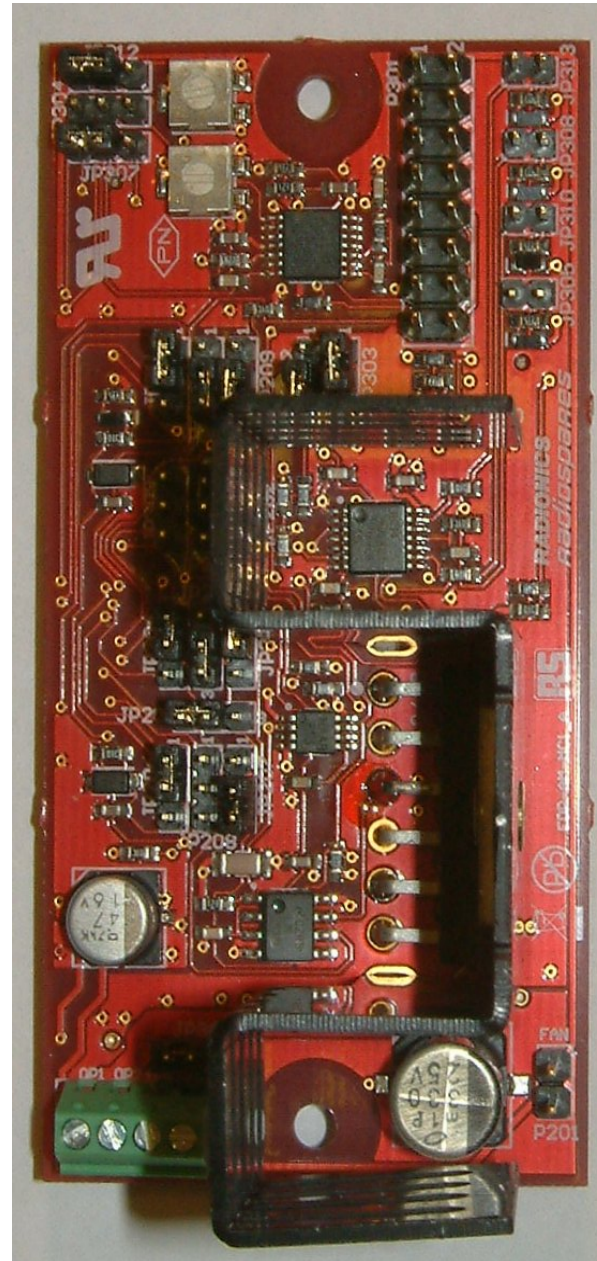
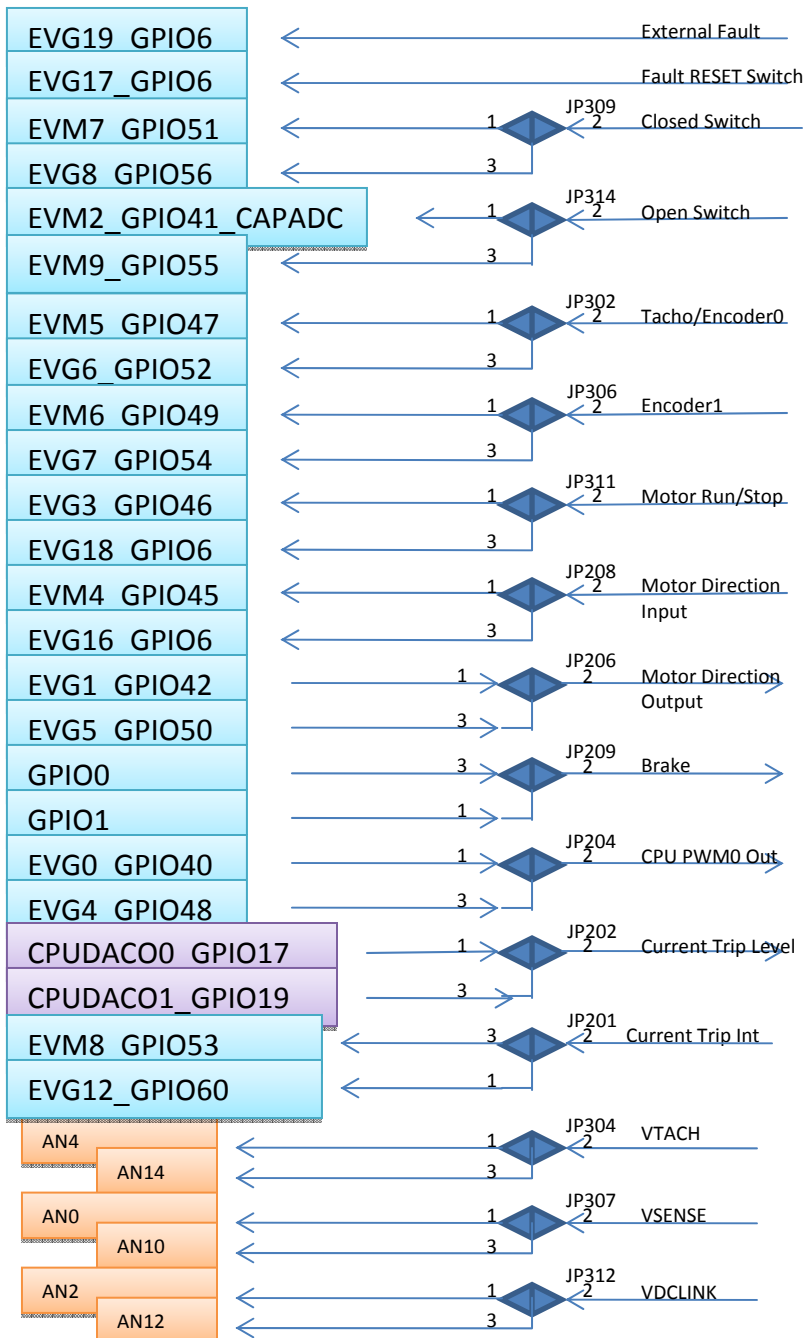


DO(0) – DO(15) are Darlington outputs, controlled by either I2C or direct MCU control  
 DO(16) – DO(18) are MCU logic level outputs controlled only by direct MCU

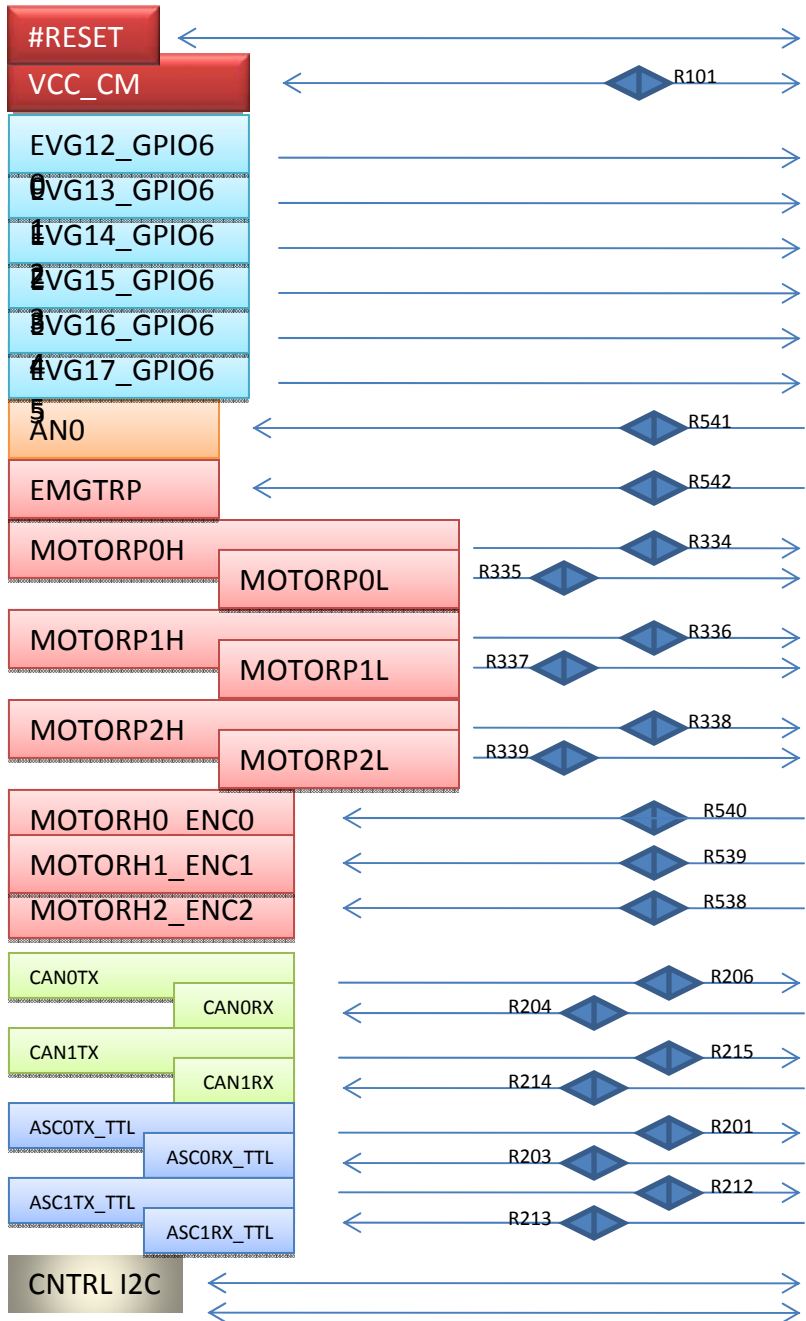
# CO1 - Communications Module to RS-EDP Backplane



# MC1 - Motor Drive Module to RS-EDP Backplane

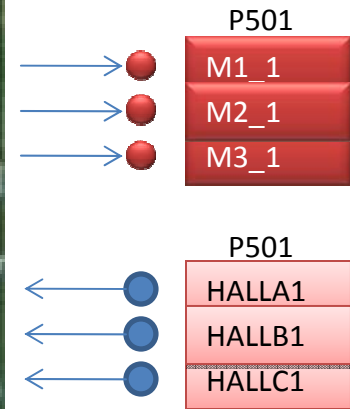


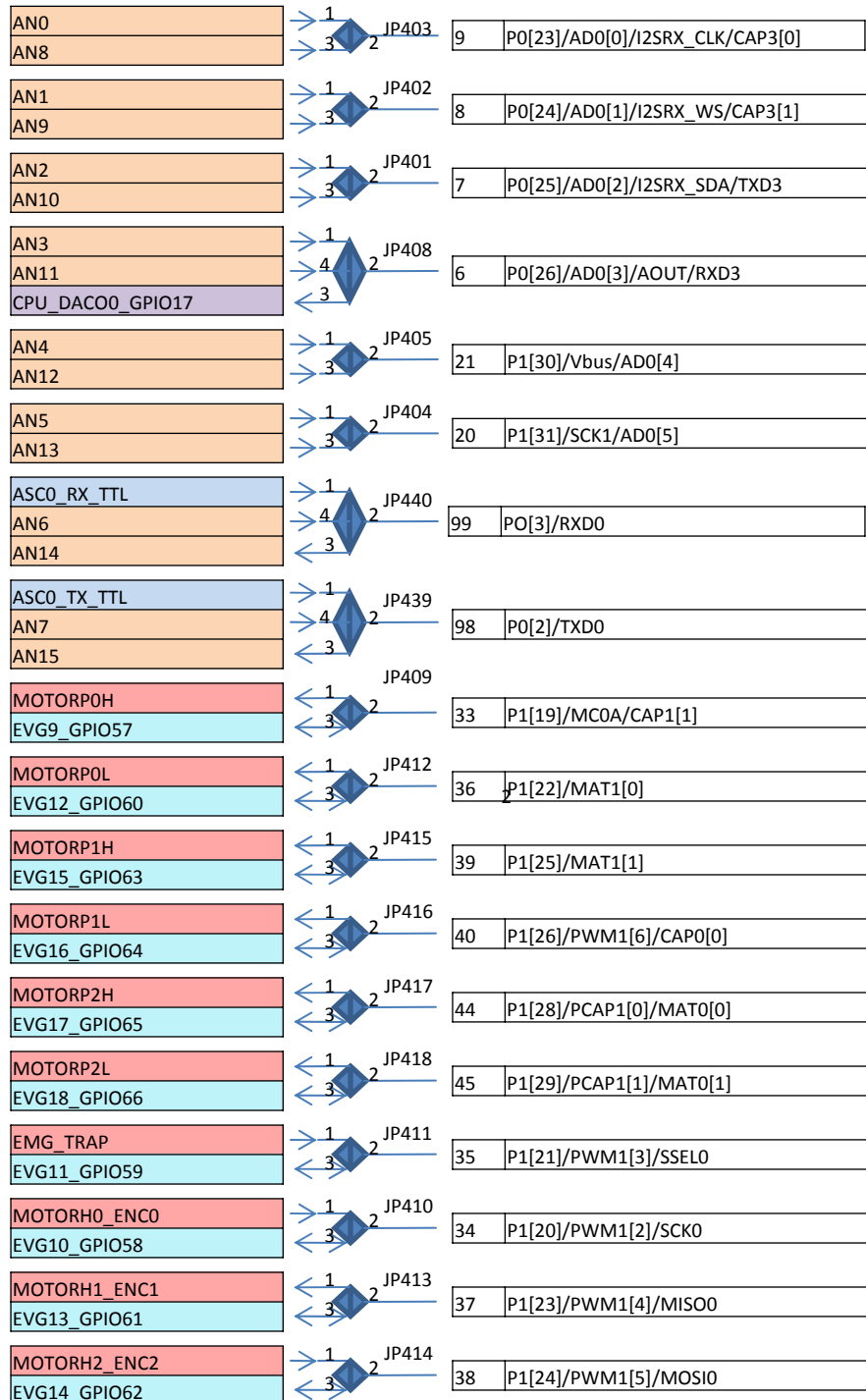
## MC2 - Motor Drive Module to RS-EDP Backplane



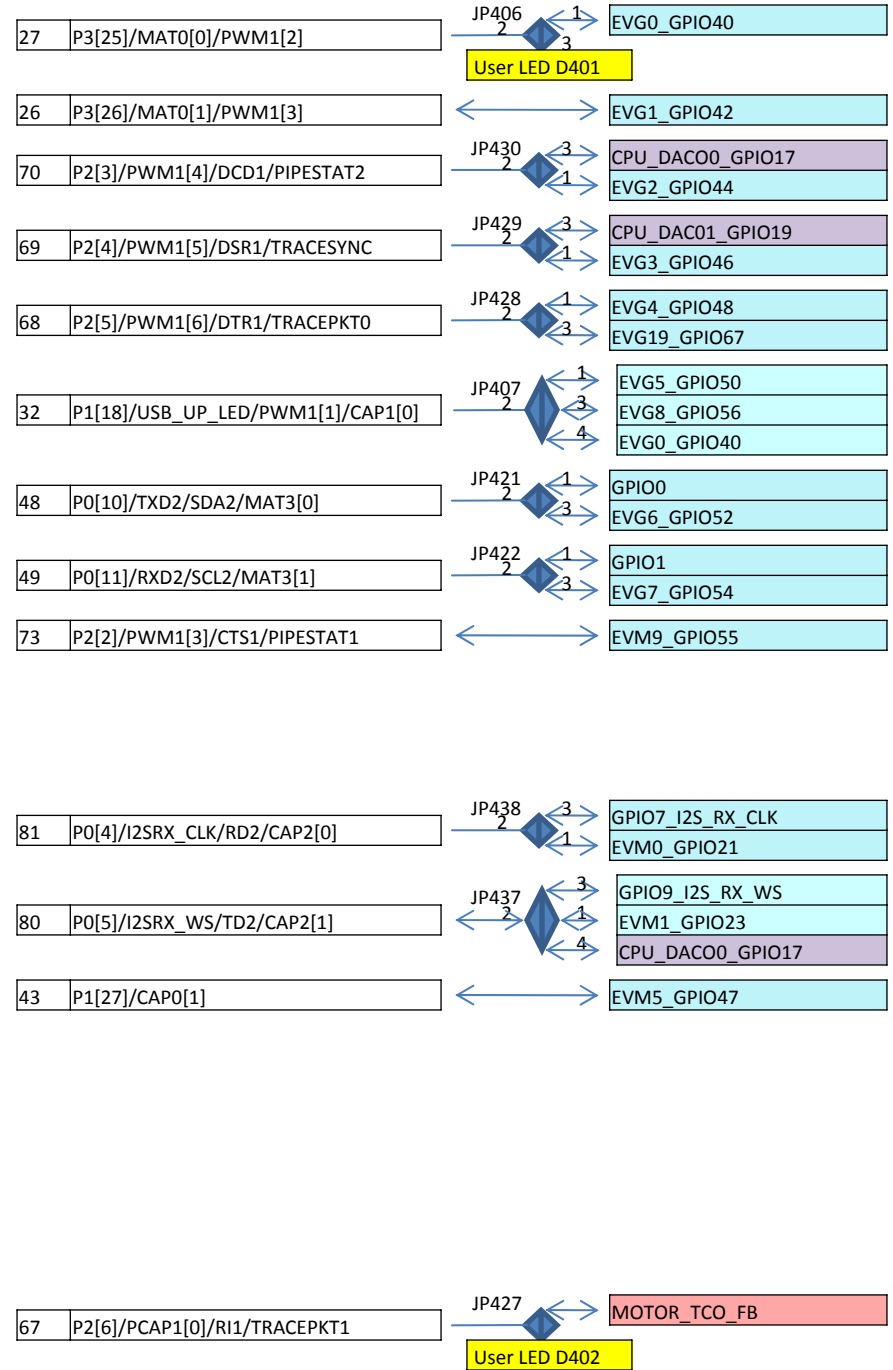
MC2 Module is a twin motor drive module.

Output connections are only shown for the motor under control from an external Command Module, via the backplane.

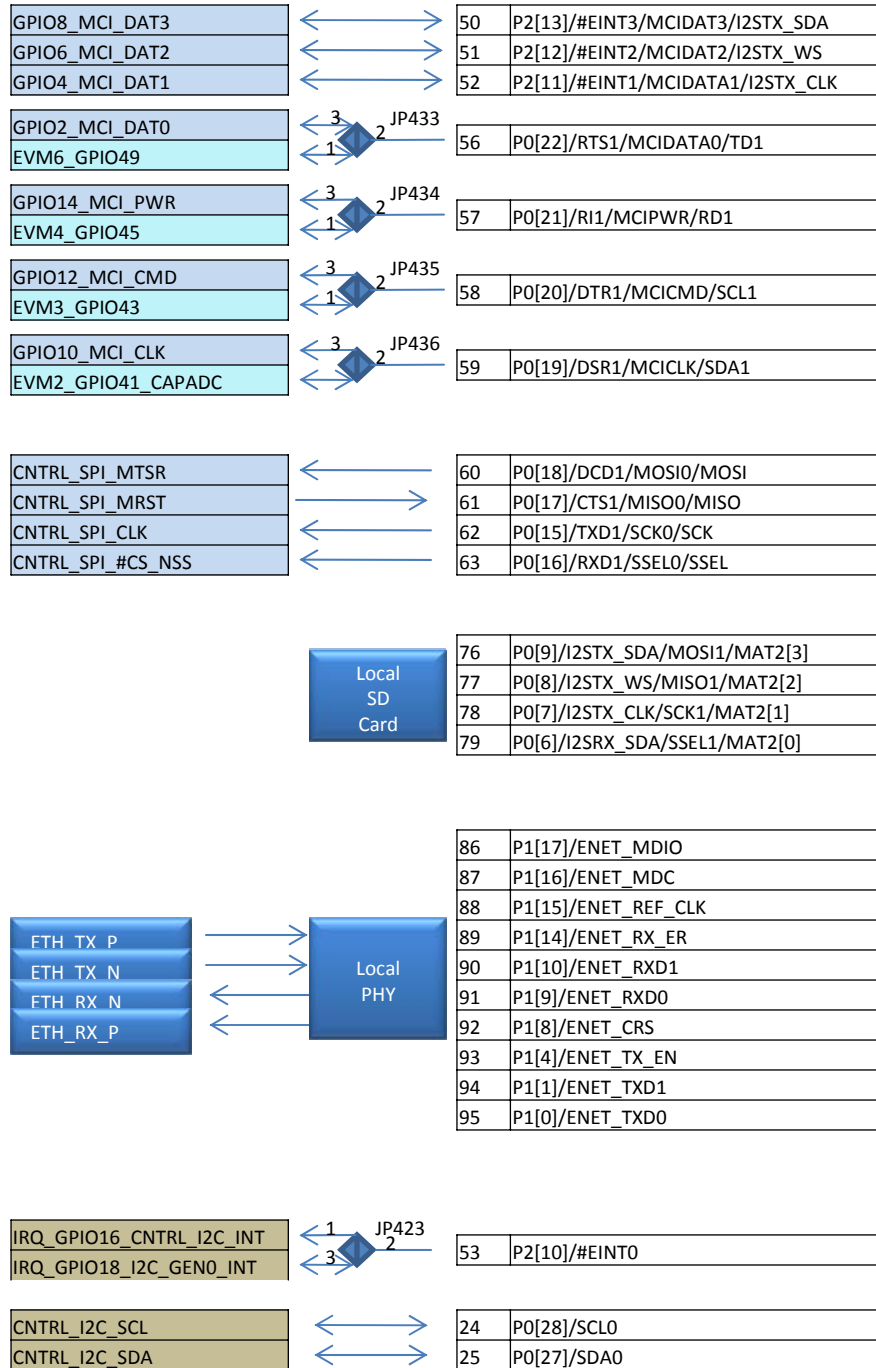




L  
P  
C  
2  
3  
6  
8  
C  
o  
m  
m  
a  
n  
d  
M  
o  
d  
u  
l  
e







L  
P  
C  
2  
3  
6  
8  
C  
o  
m  
m  
a  
n  
d  
M  
o  
d  
u  
l  
e

